



ENVIRONMENTAL INSPECTION AND COMPLIANCE

If your project has environmental impacts, it is critical to proactively work with consultants who can help you look ahead to minimize obstacles and work through issues that inevitably arise during construction. From full-time construction monitoring to as-needed site inspections, SWCA's environmental compliance services ensure that you meet project deadlines while adhering to the regulatory requirements associated with your project.

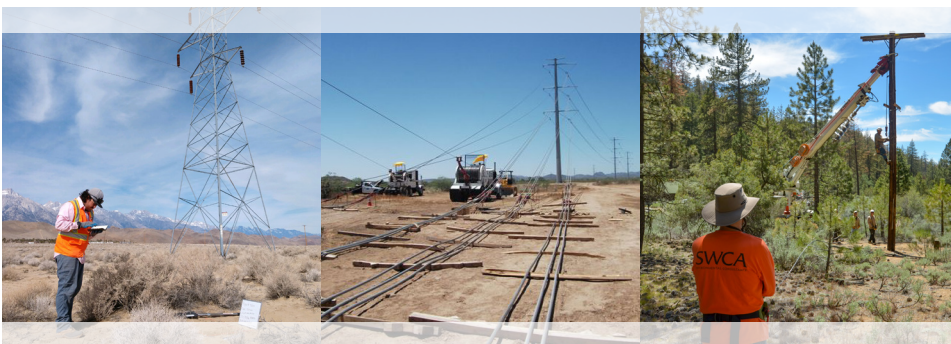
We provide construction-based environmental inspection services — using electronic reporting in the field — to help you meet the obligations of your environmental permits, agreements, and regulations to minimize violations.

Not only do we prepare Spill Prevention, Control, and Countermeasure plans and SWPPPs, we also understand and implement, as appropriate, Federal Energy Regulatory Commission's Upland Erosion Control, Revegetation, and Maintenance Plan and Wetland and Waterbody Construction and Mitigation Procedures. Our experts use their multi-disciplinary experience with infrastructure-related environmental issues to ensure that all federal, state, and local regulations are followed from preconstruction planning to long-term monitoring of revegetation success.

Through our construction personnel training, we help contractors meet project owners' standards and control costs. We use a variety of tools and presentation materials to increase awareness and environmental responsibility on every project.

SERVICES & CAPABILITIES

- Construction Inspection and Monitoring
- Third-Party Inspection Services
- Environmental Compliance Training
- Compliance Management Plans
- National Pollutant Discharge Elimination System (NPDES) and Stormwater Pollution Prevention Plan (SWPPP) Monitoring and Reporting
- Spill Prevention and Control and Countermeasure Monitoring and Reporting
- Clean Water Act Section 404 and Section 401 Permit Compliance
- Hydrostatic Test Water Source and Discharge Permitting
- Surface and Groundwater Sampling and Impact Assessment
- Cultural Resource Monitoring and Reporting
- Paleontology Monitoring
- Environmental Damage Assessments
- Habitat Restoration Plans
- Salvage and Relocation of Sensitive Species
- Wetland Mitigation and Conservation Banking



CONTACT

JON KEHMEIER

Vice President – Scientific and
Technical Services
T: (720) 951-0600
E: jkehmeier@swca.com

STEPHANIE HUDGINS

Vice President – Business
Development, Power and Energy
T: (813) 376-0189
E: stephanie.hudgins@swca.com

SWCA®
ENVIRONMENTAL CONSULTANTS

REPRESENTATIVE PROJECTS IN THE WEST

HOBBS-CHINA DRAW TRANSMISSION LINE PROJECT

SWCA provided permitting services and developed the construction compliance management program for an approximate 122-mile 345 kilovolt (kV) transmission line which traversed a mix of private, state, and federal lands in New Mexico. SWCA provided daily environmental inspection as well as biological and cultural monitoring services to ensure compliance with permits and environmental stipulations as well as avoid and protect sensitive resources. Environmental training was provided daily to contractor personnel. Key resource concerns included karst topography, visual resources, land use, habitat presence for the federally listed lesser prairie chicken, and cultural resources. The project schedule only allowed for 3.5 years to site, design, permit, construct, and commission the facility. SWCA assisted in keeping the project on track and was able to anticipate and proactively seize an opportunity to gain several months in the schedule.

CLIENT

Xcel Energy

PROJECT LOCATION

New Mexico

DESCRIPTION OF SERVICE

Permitting support, compliance training program, site inspections, monitoring, agency coordination

CHINA DRAW-ROADRUNNER TRANSMISSION LINE PROJECT

SWCA recently provided permitting and environmental compliance management support on an approximately 40-mile 345 kV transmission line located in New Mexico. Services included construction preparation, conducting daily inspection of construction activities to ensure compliance with the Bureau of Land Management (BLM) Carlsbad Field Office and New Mexico State Land Office right-of-way grants, coordinating with contractors and agency personnel regarding compliance concerns and resolution, providing environmental compliance training to crews prior to construction activities, monitoring and documenting active raptor and passerine nests as well as sensitive cactus species, and monitoring archaeological sites during construction.

CLIENT

Xcel Energy

PROJECT LOCATION

New Mexico

DESCRIPTION OF SERVICE

Permitting support, compliance training program, site inspections, monitoring, agency coordination

CHOCKECHERRY SIERRA-MADRE WIND PROJECT

SWCA provided the entire construction environmental compliance program for the 896-turbine, 3,000-megawatt (MW) Chokecherry and Sierra Madre Wind Energy Project. This project is located on a 500-square-mile ranch and includes the construction of access roads, turbines, internal transmission lines, a quarry, water extraction facilities, and a railroad loading facility in Carbon County, Wyoming. Since 2010, as the primary environmental consultant, SWCA has worked closely with Power Company of Wyoming to characterize environmental resources and develop a project design to avoid and minimize potential impacts of the project. SWCA developed a robust, customized environmental compliance management system through a web-enabled, real time—approximate project portal, with auto-generated daily and weekly summary reports based on site inspection datasets. This system has allowed for multi-party access to site inspections, streamlined the variance and permit modification process, and enhanced communications between the BLM, Power Company of Wyoming, SWCA's compliance inspectors, and the construction contractor. This increased communication has resulted in continuous improvement processes that have decreased the number of compliance issues identified during construction phases of the project.

CLIENT

Power Company of Wyoming

PROJECT LOCATION

Wyoming

DESCRIPTION OF SERVICE

Full environmental compliance management program

ELDORADO-LUGO-MOHAVE CAPACITOR PROJECT

SWCA provided third-party compliance management support for Southern California Edison's Eldorado-Lugo-Mohave (ELM) project working directly under the supervision of the BLM California Desert District Office. The ELM project spans approximately 300 miles traveling northeast from the Lugo Substation (located in San Bernardino County, California) to the Mohave Substation (located in Clark County, Nevada), and then extends northwest from the Mohave Substation to the Eldorado Substation (located in Boulder City, Nevada). SWCA provided daily compliance inspection monitoring for the project to ensure that the ELM project was completed in accordance with all environmental protection measures contained within the ELM Plan of Development, and in accordance with the approved federal authorizations issued by the BLM, U.S. Bureau of Reclamation, and National Park Service grant/permit, stipulations, and its inclusions. This was accomplished through daily site inspections and monitoring of construction activity, which was documented in detailed reports and photographs of activities and findings. SWCA served as the focal point of contact for the BLM and was responsible for ensuring that all ELM environmental monitors (i.e., biological, cultural, hazardous materials, etc.) were on-site and performed as stipulated in the environmental protection measures for the project.

CLIENT

Southern California Edison

PROJECT LOCATION

California and Nevada

DESCRIPTION OF SERVICE

Site inspection, monitoring, management of all environmental monitors, agency coordination

CONFIDENTIAL SOLAR PROJECT

SWCA provided third-party compliance monitoring for the 2.5-year construction phase of First Solar's Confidential Solar Farm Project. The project consisted of the construction of a 300-MW solar photovoltaic energy-generating facility on 1,685 acres of public land managed by the BLM in California. SWCA served as the eyes and ears of the BLM project manager, communicating daily observations to the BLM through detailed and accurate reports, working collaboratively with First Solar personnel on a daily basis to resolve non-compliance issues at the lowest level—in the field—to solve problems before issues escalated. This high-visibility project involved compliance with mitigation measures for many sensitive resources, including desert tortoise, burrowing owl, desert kit fox, nesting birds, and cultural and paleontological resources.

CLIENT

First Solar

PROJECT LOCATION

California

DESCRIPTION OF SERVICE

Monitoring, agency coordination, mitigation planning