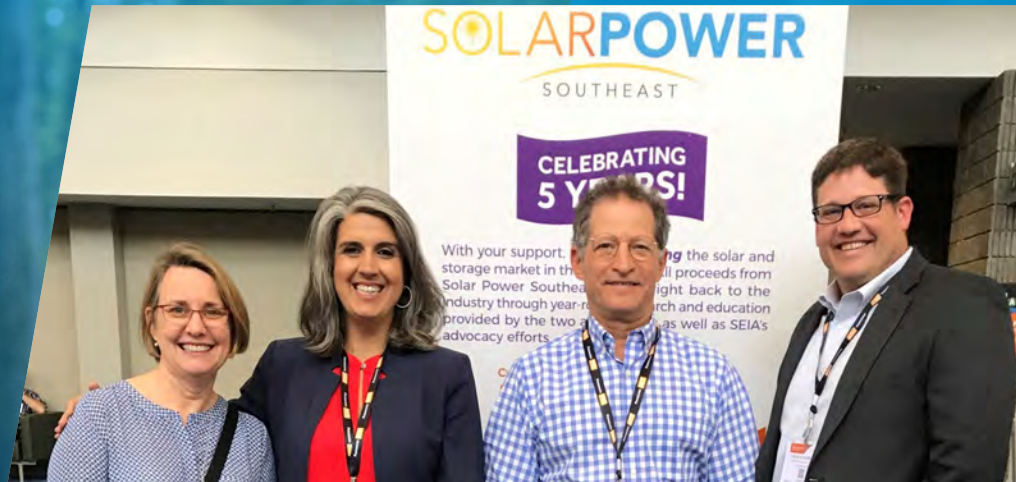


SWCA

2019

Sustainability Program Highlights Appendix



2019 Sustainability Plan Goals

GOAL 1:
REDUCE GREENHOUSE
GAS EMISSIONS

GOAL 2:
REDUCE IMPACTS ON
NATURAL RESOURCES

GOAL 3:
ENVIRONMENTAL
STEWARDSHIP

GOAL 1:
Reduce Greenhouse Gas Emissions

SWCA is committed to reducing our greenhouse gas (GHG) emissions through the following actions:

- Reduce energy consumption in all offices
- Reduce emissions from company business travel, including air travel, employee-owned, company-owned, and rental vehicles
- Promote alternative modes of transportation, including carpools and public transportation

Inventory Methodology

To calculate SWCA's GHG emissions, an inventory we conducted in accordance with the standards outlined in The Climate Registry's General Reporting Protocol, an internationally recognized GHG reporting protocol developed for organizations in North America.

All SWCA offices are included in the 2019 emissions inventory. SWCA offices primarily consist of leased office space in multi-tenant buildings. In some cases, accurate data were not available, and estimates were used based on historical data plus new growth. We did not include impacts from home-based employees for this inventory because personal residences are not under the company's operational control.

The following GHG emission sources are included in this inventory:

- Electricity use in offices
 - Natural gas use in offices
 - Fuel use for company-owned highway fleet vehicles
 - Fuel use for company-owned marine craft
 - Fuel use for employee-owned vehicles
- Fuel use for business air travel
 - Fuel use for rental vehicles
 - Fuel use for employee commuting
 - Fuel use for company-owned ATVs
 - GHG emissions from SWCA landfill waste

2019 Greenhouse Gas Inventory Results

SWCA's 2019 GHG total for all offices is 6,101 metric tons (Mt.) of carbon dioxide equivalent (CO₂e). The GHG inventory was divided into five general emissions categories (Figure 1). The top emissions category was business travel using employee-owned vehicles, rental vehicles, and airline, which made up 60 percent of our total emissions. Office energy use and employee commuting were tied as the second-largest emissions category, accounting for 15 percent each of our GHG emissions.



Figure 1 | GHG Emissions by Category

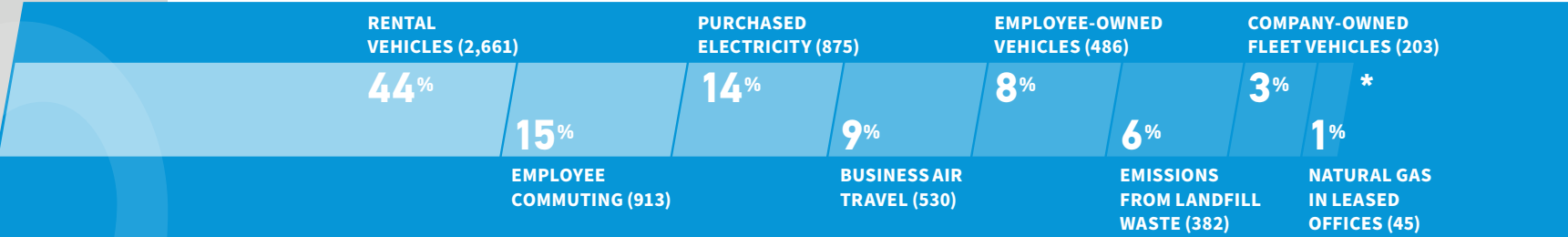


Table 1 | SWCA's 2019 Company-wide Emissions by Scope and Source

Emissions by Scope*	Mt. CO ₂ e
Scope 1: Direct Emissions	
Fuel use for company-owned highway fleet vehicles	203
Fuel use for company-owned ATVs	6
Scope 2: Indirect Emissions	
Purchased electricity use	875
Natural gas use in leased office spaces in shared buildings	45
Scope 3: Other Indirect Emissions	
Fuel use for rental vehicles	2,661
Fuel use for employee owned vehicles	486
Fuel use for employee commuting	913
Fuel use for business air travel	530
Emissions from SWCA landfill waste	382
Total 2019 Emissions	6,101

*The Climate Registry's General Reporting Protocol requires that GHG emissions be reported by scope. Scope 1 emissions are directly owned and controlled by SWCA (i.e., company vehicles, etc.). Scope 2 emissions are indirect emissions owned by another entity but largely controlled by SWCA (i.e., electric use, etc.). Scope 3 emissions are neither owned nor managed by SWCA but result from company activity (i.e., airline travel, rental cars, employee commuting, etc.).

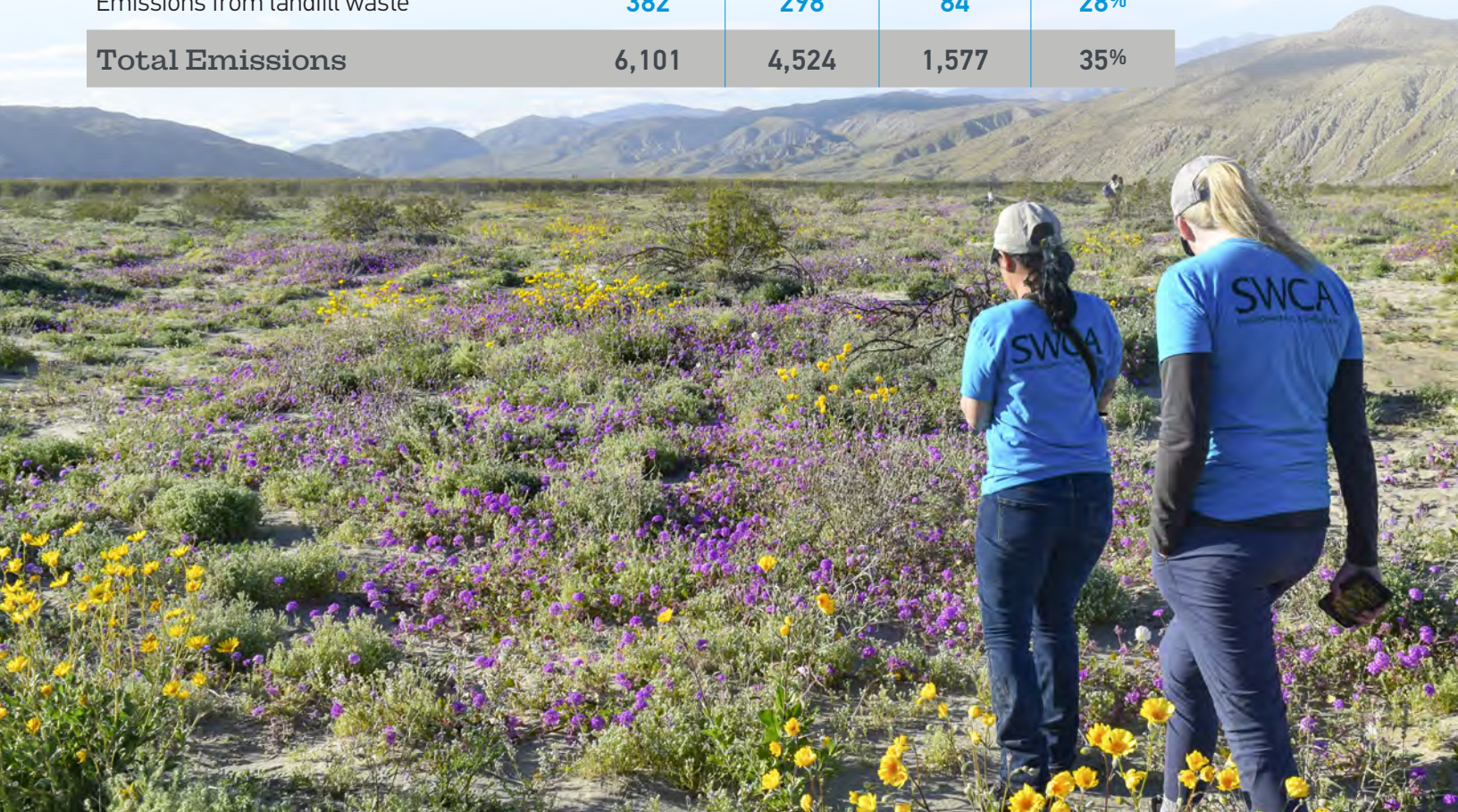
Figure 2 | SWCA's 2019 Company-wide GHG Emissions Inventory by Source



* 0% OTHER COMPANY-OWNED VEHICLES (6)

Table 2 | SWCA 2018-2019 Inventory Comparison Summary

	2019 Mt. CO ₂ e	2018 Mt. CO ₂ e	Change	Percentage
Scope 1				
Natural gas for company-controlled heating equipment	0	0	0	N/A
Coolant replacement	0	0	0	N/A
Fuel use for company-owned fleet vehicles	203	157	46	29%
Fuel use for other company-owned vehicles	6	6	0	0%
Scope 2				
Purchased electricity	875	681	194	28%
Natural gas use, leased office space	45	41	4	10%
Scope 3				
Fuel use for rental vehicles	2,661	1,638	1,023	62%
Fuel use for employee-owned vehicles	486	528	-42	-8%
Fuel use for employee commuting	913	750	163	22%
Fuel use for business air travel	530	425	105	25%
Emissions from landfill waste	382	298	84	28%
Total Emissions	6,101	4,524	1,577	35%



GOAL 2: Reduce Impacts on Natural Resources

SWCA focuses on the following actions to reduce landfill waste and other impacts of our actions on natural resources:

- Reduce paper consumption
- Recycle in all offices
- Practice green purchasing
- Practice water conservation

2019 WASTE AND RECYCLING METHODOLOGY AND RESULTS

SWCA collected landfill waste and recycling data from each office. Across all offices, SWCA recycled an estimated 128 tons of material.

SWCA's recycling and reuse practices reduced our company's annual emissions by approximately 317 Mt. CO₂e, which is equivalent to taking 1,460 U.S.-average cars off the road. To further our conservation goals, 100 percent of SWCA offices recycled, used recycled paper, and reported ongoing energy conservation efforts.

100%

OFFICES RECYCLED

100%

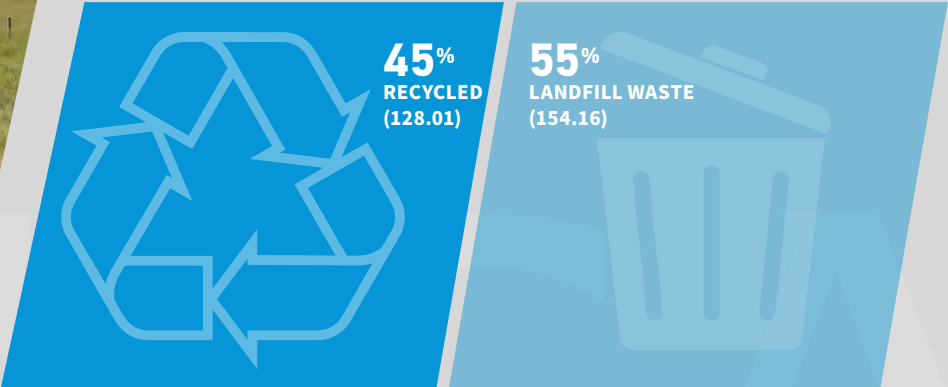
OFFICES USED
RECYCLED PAPER

100%

OFFICES PRACTICED
ENERGY CONSERVATION



Figure 3 | SWCA 2019 Landfill vs. Recycled Waste



GOAL 3:
Environmental Stewardship

SWCA encourages environmental stewardship through our Gives Back program. SWCA Gives Back, one of our Core Values, is a coordinated community service program that grew out of an array of volunteer efforts and charitable activities in our offices. Local office champions encourage employees to participate in activities that improve the environment of the communities where we work and live. They also work to identify environmental organizations and causes that we can support collectively as a company.

In 2019, SWCA participated in 58 environmental stewardship events through the SWCA Gives Back program, more than double the events from 2018. The events and organizations that benefited are as follows:

1. *City of Albuquerque Tree Planting Event*

2. *City of Albuquerque Annual Clean-Up Event*

3. *Albuquerque Open Space Division Earth Day Clean-Up*

4. *Discovery Festival Environmental Stewardship Event – Big Brothers Big Sisters of Central New Mexico*

5. *Animas River Days Festival – Durango Whitewater/San Juan Clean Water Coalition*

6. *Valley Bird Festival – Hampshire Bird Club*

7. *Source to Sea Clean-Up – Connecticut River Watershed Council*

8. *Trash Bash River Clean-Up – River Legacy Foundation*

9. *Lake Mineral Wells State Park Environmental Stewardship Event – Texas Parks and Wildlife Foundation*

10. *Lake Mineral Wells State Park Stewardship Hike – Texas Parks and Wildlife Foundation*

11. *It's My Park Day Fall Event – Austin Parks Foundation*
12. *Blue Hole Regional Park Bird Walk – City of Wimberley Parks and Recreation Department*

13. *Spring Clean-Up Week Event – City of Bismarck*

14. *Invasive Species Removal Volunteer Event – Alms Advisory Council*

15. *Volunteer Stream Monitoring Event – Great Parks of Hamilton County/ Great Parks Forever Foundation*

16. *Plant Identification and Environmental Clean-Up – Boy Scouts of America*

17. *Chicago River Day Clean-Up – Friends of the Chicago River*

18. *Playground and Garden Mulching/ Clean-Up – Mount St. Vincent*

19. *Thorne Nature Experience Environmental Stewardship Event*

20. *Nature Center Educational Event – Bluff Lake Nature Center*

21. *Xcel Energy Giving Day Clean-Up – Westminster Open Space and Trails*

22. *Adopt-A-Trail Clean-Up – Westminster Open Space and Trails*

23. *Adopt-A-Trail Clean-Up – Broomfield Open Space and Trails*

24. *Earth Day Clean-Up and Stewardship Celebration – AZ Conservation Corps*

25. *Highway Clean-Up – ADOT*

26. *Downtown Trash Pick-Up/ Beautification Event – Litterati & City of Flagstaff*

27. *Annual Beach Clean-Up – Pacific Beach Coalition*

28. *Yolo Causeway Bridge Bat Stewardship June Event – Yolo Basin Foundation*

29. *Yolo Causeway Bridge Bat Stewardship August Event – Yolo Basin Foundation*



58
ENVIRONMENTAL
STEWARDSHIP
EVENTS IN WHICH SWCA
EMPLOYEES PARTICIPATED



36. *SCE Transmission Environmental Clean-Up Event*

37. *River Environmental Clean-Up and Educational Event – Ventura Audubon Society*

38. *San Francisquito Canyon Aquatic Barrier Volunteer Restoration Event – National Fish and Wildlife Foundation*

39. *Salt River Environmental Clean-Up – Natural Restorations*

40. *Papago Park Preserve Wildlife Species Documentation – AZ NPS BioBlitz*

41. *Tempe Trash Clean-Up Event – Local First Arizona*

42. *Bulldog Canyon Environmental Clean-Up – Natural Restorations*

43. *Salt River Coon Bluff Environmental Clean-Up – Natural Restorations*

44. *Adopt-A-Highway April Clean-Up – PennDOT*

45. *Adopt-A-Highway October Clean-Up – PennDOT*

46. *Mulch About Town Riverbank Mulching Event – Johnson Creek Watershed Council*

47. *Adopt-A-Spot Clean-Up – Keep Truckee Meadows Beautiful*
48. *Sustainable Farming Planting Event – New Roots-International Rescue Committee*

49. *Earth Day Clean-Up – Friends of Cedar Mesa*

50. *SOCKids Wasatch Mountains Environmental Stewardship Event – Save Our Canyons*

51. *Environmental Stewardship Day – Project Discovery Utah*

52. *Adopt-A-Park August Clean-Up – San Antonio Parks Foundation*

53. *Adopt-A-Park September Clean-Up – San Antonio Parks Foundation*

54. *Basura Bash Annual River Clean-Up – San Antonio River Foundation*

55. *Pismo Nature Preserve Clean-Up – San Luis Obispo Land Conservancy*

56. *Beach Clean-Up Event – Cayucos Land Conservancy*

57. *Adopt-A-Highway July Clean-Up – WYDOT/Wyoming Wilderness Foundation*

58. *Adopt-A-Highway August Clean-Up – WYDOT/Wyoming Wilderness Foundation*

Vision and Commitment

Sustainability Vision

SWCA believes that achieving a sustainable balance between humanity’s social, economic, and environmental needs is essential in providing a healthy planet for future generations. We believe our sustainability actions will create a stronger company and will help ensure a prosperous future for our employees, clients, and the communities we live in. We will be innovative and proactive leaders in sustainable business practices, and we will promote such practices by serving as a positive example for others.

Our Commitment

SWCA is committed to sustainability, as demonstrated by our work helping others implement sustainability practices and our dedication to good corporate citizenship. This is important for our staff, our communities, and our world. Our commitment includes creating a clean and sustainable environment for future generations.



About SWCA

For almost four decades, SWCA has provided comprehensive environmental planning, regulatory compliance, natural and cultural resources management, climate-driven services, and air quality services to businesses and government clients across the United States. We are an employee-owned firm of scientists, planners, and technical specialists. We combine scientific expertise with sound technical skills to provide creative solutions to a full spectrum of environmental projects.





CONTACT

800.828.8517

info@swca.com

www.swca.com

100% *Employee* OWNED