

SWCA MEDIA RESOURCES

SWCA Environmental Consultants supports media with clear, reliable information on our work, expertise, and impact. This overview provides a concise snapshot of the firm, including who we are, what we do, and the scale of our work. All information is verified and intended to support accurate reporting and citation.

The images and logos on this page are available for editorial use only by press agencies and journalists in connection with articles, reports, broadcasts or news stories about SWCA.

DOWNLOAD HIGH-RES IMAGES AND BRAND ASSETS



DOWNLOAD LOGOS

LOGO GUIDELINES

HIGH-RES IMAGES

OUR NUMBERS

1700+
EMPLOYEES

46
OFFICES

FOUNDED
1981

98.6%
CLIENT
SATISFACTION

100%
Employee
OWNED
SINCE 2000

\$365K RAISED TO SUPPORT COMMUNITY
NON PROFITS SINCE 2025

ABOUT
SWCA

Since 1981, SWCA Environmental Consultants has navigated global environmental challenges for our clients, delivering project success from strategic planning to successful implementation. Founded on a commitment to sound science and creative solutions, SWCA partners with clients to advance projects that balance progress, environmental stewardship, and lasting value. We bring clarity to complexity by helping organizations move forward with confidence in an increasingly dynamic environmental landscape.

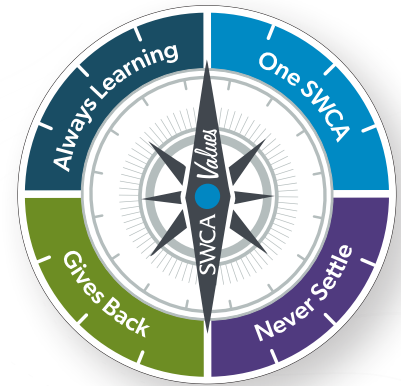
As trusted advisors, our teams work collaboratively across environmental planning and permitting, cultural resources, ecological and biological sciences, water resources, resilience, air quality, and engineering. Through a combination of technical depth and real-world experience, we deliver solutions that are responsive to regulatory demands while supporting broader business, infrastructure, and community goals.

SWCA released its 2025 Sustainability Report, highlighting how the company applies sustainability across business decisions and project delivery. The report outlines SWCA's progress in 2025 and priorities for 2026. With a focus on long-term stewardship and sound science, the report tracks SWCA's sustainability efforts in terms of Planet, People, Partnerships, and Governance. To review the full report and learn more about SWCA's approach, visit [Sustainability at SWCA](#).



OUR VALUES

At SWCA, our four core values guide everything we do, helping us meet our commitments to clients by delivering high-quality products on-time and within budget, while also providing our employees with opportunities for career growth and meaningful work. These values are at the heart of our daily operations, creating clarity and alignment around four guiding principles that shape our decisions and strategies, serving as a compass to steer us forward.



OUR CORE VALUES

OUR LEADERSHIP

OUR CEO

As CEO and President of SWCA, Joseph J. Fluder, III, is passionate about delivering Sound Science and Creative Solutions to clients and ensuring SWCA is a great place to work for employees. He works with the Board of Directors and leadership to define the strategic vision and develop strategies that result in employee retention, high-quality deliverables, strong financial performance, and growth that provides value to employees, clients, and communities. He focuses SWCA on what makes the organization unique: leading with scientific and technical prowess, reinforcing strong company culture, maintaining an employee ownership structure, harnessing the latest technologies, and offering clients global capabilities and local expertise.



Joseph joined SWCA in 2003 as a water resources and GIS specialist in the company's Albuquerque, New Mexico, office. He's held a variety of technical, client-focused, and leadership positions throughout his time and remains engaged with clients, business development, and project execution to this day.

LEADERSHIP

OUR SERVICES

Our teams bring insight across a broad range of environmental services with a focus on helping clients advance projects with clarity in a complex regulatory and environmental landscape. Whether navigating permitting, managing compliance, or stewarding natural resources, our teams provide the expertise and direction needed to guide projects from early planning to successful completion.



> AIR QUALITY AND NOISE SERVICES



> BIOLOGICAL AND ECOLOGICAL SERVICES



> COMMUNITY ENGAGEMENT



> CONSTRUCTION SERVICES



> CULTURAL RESOURCES



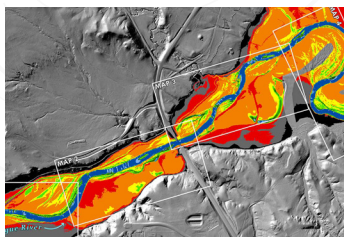
> EARTH SCIENCES



> ECOSYSTEM RESTORATION



> ENGINEERING



> GIS AND GEOSPATIAL DATA



> INDIGENOUS SERVICES



> PLANNING AND PERMITTING



> RESILIENCE SERVICES



> ROUTING AND SITING STUDIES



> SPILL RESPONSE AND NRDA



> WATER RESOURCES



> WILDFIRE SERVICES

AWARDS AND INDUSTRY RECOGNITION

SWCA continues to be recognized for its growth, technical expertise, and impact across the environmental industry, including:

- Placement on industry benchmarks such as the ENR Top 500 Design Firms
- Ranking #17 in Environmental Analyst's Top 100 US Environmental & Sustainability Consulting Market Assessment
- Environmental Business Journal Business Achievement Award for strong business performance



[environmentanalyst](#) | [global](#)

[VIEW AWARDS AND INDUSTRY RECOGNITION](#)

SWCA IN THE NEWS

As leaders in environmental and management consulting, we provide expert analysis, advice, and insights. Explore our latest news, project highlights, and expert insights that reflect how our teams are helping clients and contributing to local communities.

[VIEW NEWS AND INSIGHTS](#)



MEDIA CONTACT

For interviews or additional context, please contact the SWCA media relations team.

Jara Sturdivant-Wilson

Marketing Content Manager - Communications

(402) 257-1480

media@swca.com